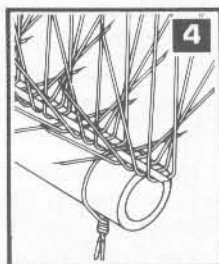
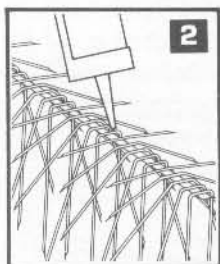
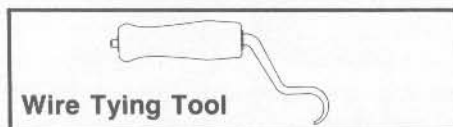


4. Slip Nixalite base strip into RB clips with Nixalite Installation Tool.

CABLES, PIPES, ETC. . .

For suspended structures, a stainless steel wire tie and adhesive system is recommended.

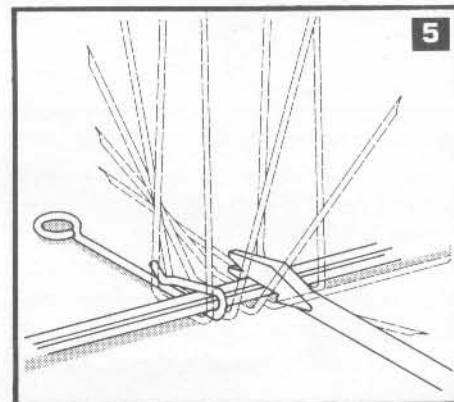
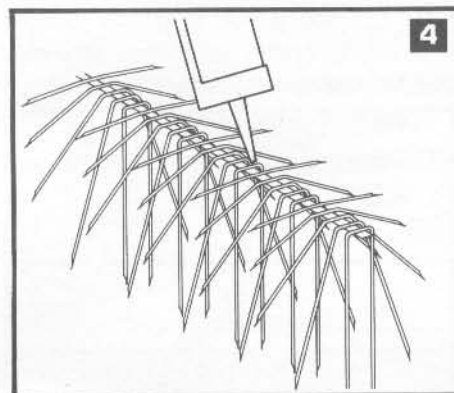
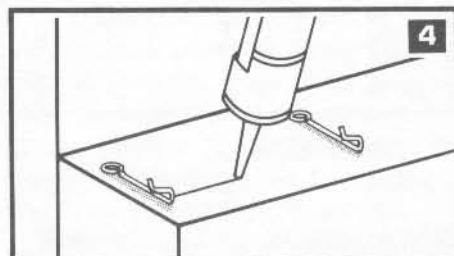
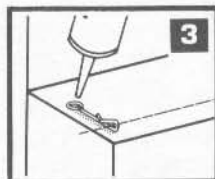
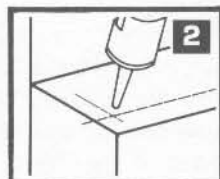
1. Clean surface thoroughly.
2. Apply adhesive to the bottom of the Nixalite base strip and to the installation surface.
3. Press Nixalite strip into the surface adhesive.
4. Wrap wire tie around the Nixalite strip and cable etc., twist loop ends with wire tying tool until tight.



3. Then cover the eyelet end of the clip with adhesive.

4. After the adhesive holding the clips has cured, apply adhesive to the bottom of the Nixalite base strip and the installation surface, slip the strips into the RB clips.

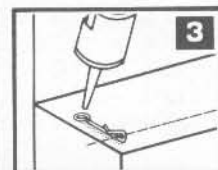
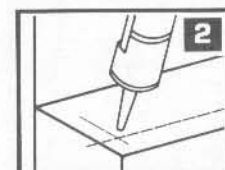
5. **It is absolutely necessary to allow the adhesive holding the RB clips to cure for at least 24 hours before inserting the Nixalite strips.**



Removable Method

If the supplied mounting hardware cannot be used, a removable adhesive installation can be done. **However, it is recommended to use one mounting unit at each end of Nixalite strip to ensure solid mounting.**

1. Clean the surface thoroughly.
2. By following manufacturers directions printed on container, apply adhesive to surface where clips are to be attached, put clips into adhesive making sure not to get any adhesive into the hook end of the clip. Hook end of the clip points toward outside.
3. Cover the eyelet end of the clip with adhesive.



4. **It is absolutely necessary to let adhesive holding the RB clips to cure for at least 24 hours before putting the strips of Nixalite in the clips.**

KEEPING TABS

By setting up a biannual visual inspection of the installation, you can keep an eye out for any debris that may get caught in the needles of the strips. Also inspect the mounting hardware system at this time. This allows re-securing the strips in the unlikely event that the strips have come loose from the hardware.

IN CLOSING . . .

When you begin a Nixalite installation, bear in mind that the birds may fight to retain their nesting and roosting places. Credit the bird for being cunning, persistent and tenacious. Sufficient Nixalite must be installed to do the job effectively. Careful observation before the installation is necessary to locate all the problem areas.

Remember that birds will try to drop sticks and other nesting materials into the Nixalite in an attempt to render it

ADHESIVE INSTALLATION INSTRUCTIONS

When the use of supplied mounting hardware is not possible, an adhesive installation can be done. **It is recommended to use one mounting hardware unit at each end of the Nixalite strip to ensure solid mounting.**

Permanent Method

1. Clean surface thoroughly.
2. By following manufacturers directions printed on container, apply adhesive to surface where clips are to be attached, put clips into adhesive making sure not to get any adhesive in the hook end of the clip. Hook end of clip points toward the outside.