

Congratulations

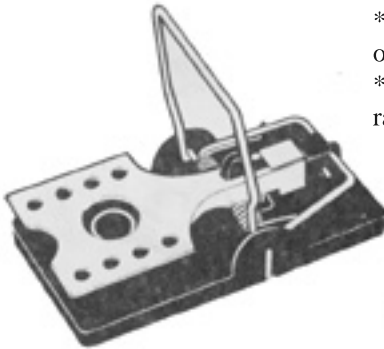
You have purchased the finest
rat trap available.

Big Snap-E RAT-TRAP



Generalized Rat Facts

- * Most common rat is the norway Rat (Also known as brown, barn, wharf, and sewer rats)
- * Nocturnal creatures (daytime sightings indicate a large population seeking new food sources)
- * Live in colonies, underground and travel up to 60 ft. to its food and water source.
- * Usually seek out its own preferred food (1 oz. food to 2 ox. water per day)
- * Runs while feeling the side of a wall or other obstacle, ranging 50 to 60 ft. indoors and up to 200 ft. outdoors.



- **Strength**
- **Integrity**
- **Dependability**
- **Reusable**
- **Effective**



Tips

Bait your Big Snap-E with the type of food stuff the rats have been eating.

Place your trap where there is evidence of travel (rodent droppings) with the front of the trap facing or touching the "travelled" wall.

Check your traps in the early morning, reset in the same spot or relocate if they are untripped. Rats often exhibit "neophobia (fear of new items). Be patient; it may take 10 to 15 days for the lead rat to investigate the Big Snap-E. (It only takes once.)